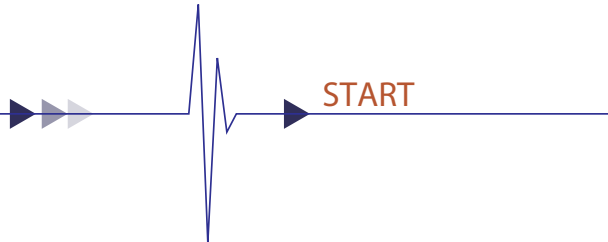




INVESTING GUIDE TAINAN



START



List of CONTENTS

01 Introduction to Tainan City

Prosperous Ancient Capital and New Tech-City



p.4

02 Overview of Tainan's Historical Development

A Century-Old Capital Entering a New Era



p.8

03 Overview of Urban Lifestyle in Tainan

A Green and Vibrant City: Livable, Flourishing, and Full of Life



p.10

04 Key Investment Industries

Industrial Hub, Securing Strategic Advantage



p.14

05 Industrial Parks and Key Zones

Abundant Resources with Worldwide Reach



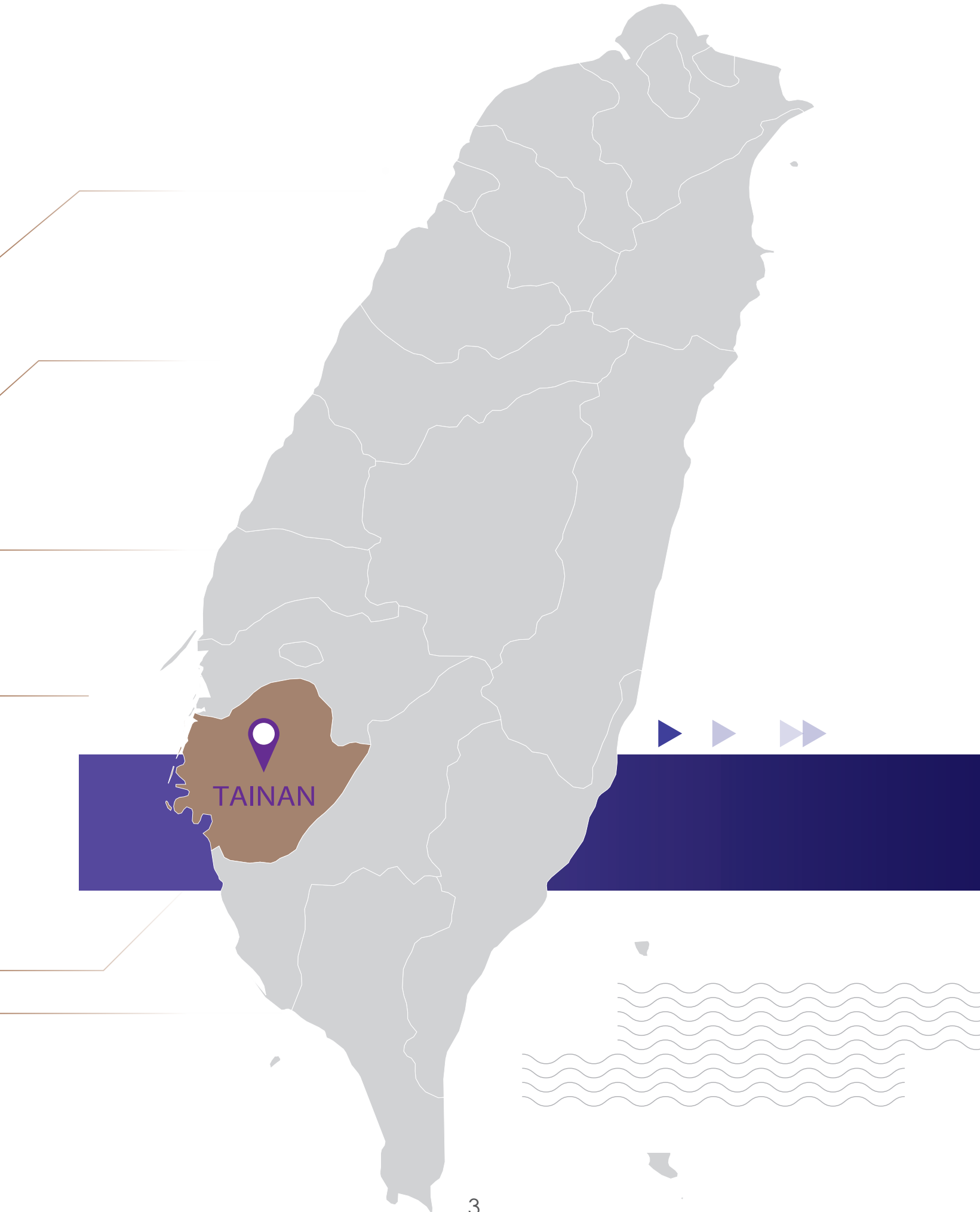
p.20

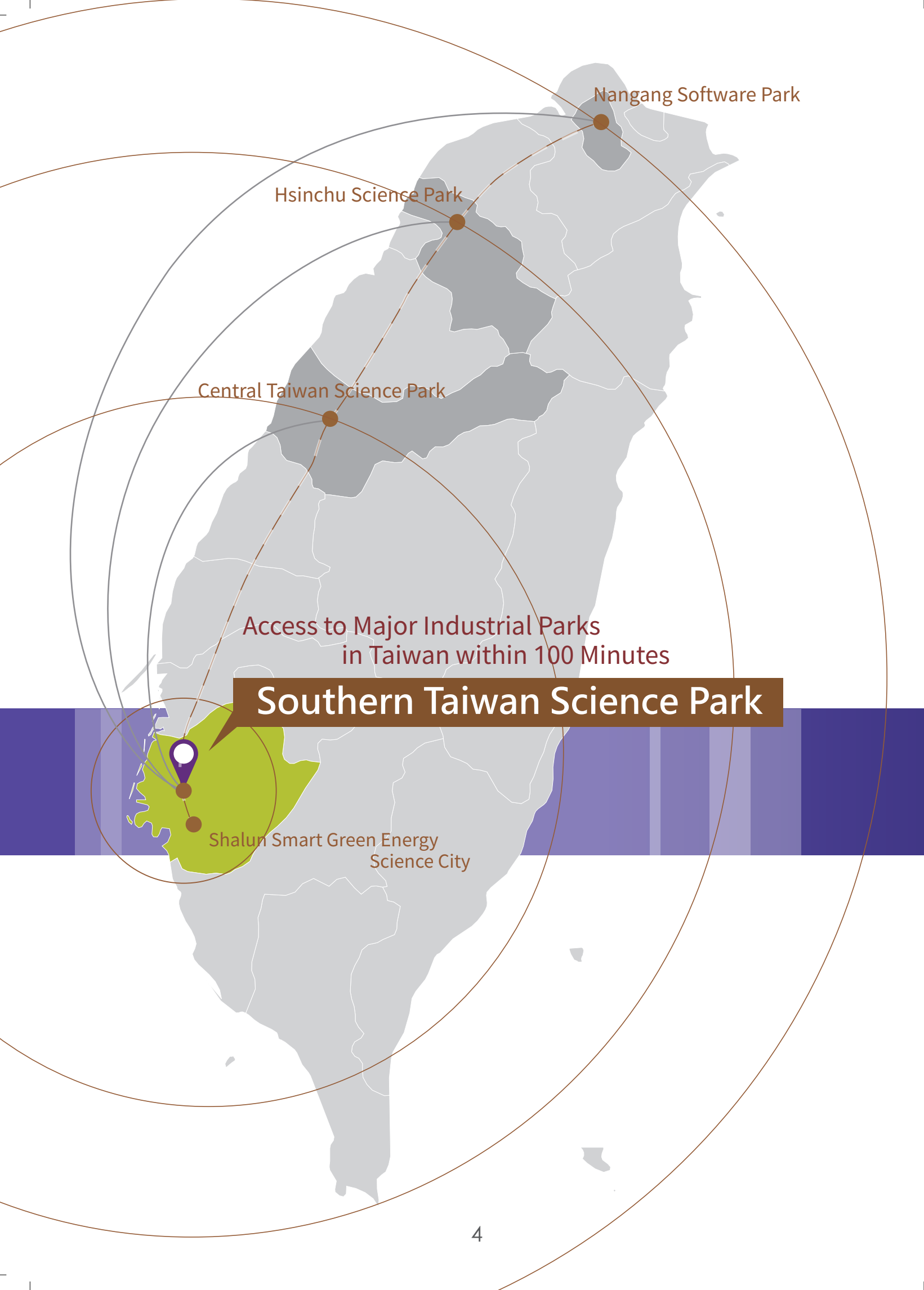
06 Investment Services and Incentives

Dedicated Investment Services: Exclusive Projects, Personnel and Responsibility



p.26





Nangang Software Park

Hsinchu Science Park

Central Taiwan Science Park

Access to Major Industrial Parks
in Taiwan within 100 Minutes

Southern Taiwan Science Park

Shalun Smart Green Energy
Science City

Tainan City, located in southwestern Taiwan, is one of the nation's six special municipalities. In terms of connectivity, with a comprehensive outbound transportation network, it serves as a major transportation hub in southern Taiwan, allowing access to the other five municipalities and key industrial parks within 100 minutes. In terms of academic and research capabilities, Tainan is home to four national-level research institutions and produces approximately 25,000 skilled talents annually. This provides the city with a strong academic R&D capacity and a rich pool of talent for high-tech industries.

Outbound Transportation Infrastructure



International airports

It takes about 20 minutes by car from the city center to Tainan Airport, and around 60 minutes to Kaohsiung Xiaogang Airport. Taoyuan International Airport can be reached in approximately 130 minutes via high-speed rail and airport MRT transfer.



High Speed Rail (HSR)

Tainan is served by the Tainan High-Speed Rail (HSR) Station, with an average daily ridership of around 28,000 passengers. This connectivity enables a same-day living and working circle between the north and south of Taiwan (approx. 100 minutes to Taipei, 42 minutes to Taichung, and 13 minutes to Kaohsiung).



Road Network

Tainan is connected by 3 national freeways (National Freeway No. 1, No. 3, and No. 8) and 4 expressways (Provincial Highways 61, 84, 86, and the Tainan Metropolitan Expressway).



Ports

It takes about 20 minutes to Anping Port from the city center and 60 minutes to Kaohsiung Port.



Railway

17 Taiwan Railway Administration (TRA) stations are within Tainan's jurisdiction

chapter 01 Introduction to Tainan City

Prosperous Ancient Capital and New Tech-City

Research Institutions

National-level research institutions such as Academia Sinica, the Industrial Technology Research Institute (ITRI), the National Institute of Applied Research (NIAR), and the National Health Research Institutes (NHRI) attract top-tier R&D talent to Tainan.

Abundant Talent

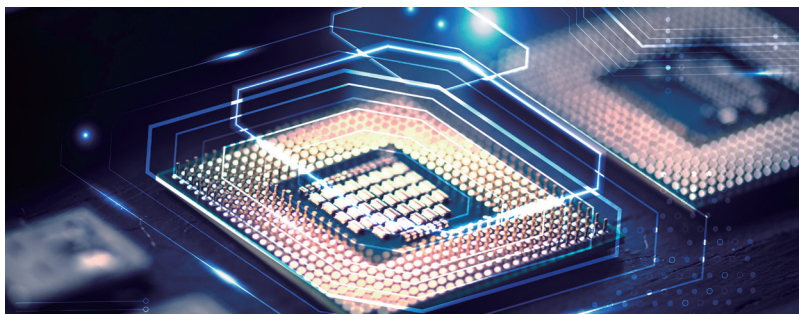
- Tainan possesses a highly skilled workforce, with 14 universities and colleges producing around 25,000 graduates annually, including approximately 4,900 master's and doctoral degree holders.
- In 2025, National Cheng Kung University ranked 31st in the Times Higher Education University Impact Rankings—second highest among Taiwanese universities. It has also achieved over NT\$100 million annually in technology transfer contract value through industry-academia collaboration for 16 consecutive years since 2009, making it the only university in Taiwan to reach this milestone.



Tainan the gateway to Taiwan's history, not only boasts a rich cultural heritage but also benefits from a mild climate with little rainfall and abundant sunshine. With more than 2,000 hours of sunlight annually, Tainan has leveraged these climatic conditions to develop a green energy technology industry centered on solar power in response to global environmental changes. It is home to the most densely concentrated solar energy industry cluster in all of Taiwan, equipped with innovative research and development capabilities and extensive production experience. In addition, Tainan hosts a variety of advantageous industrial clusters,



One of Taiwan's most popular travel destinations that blends the charm of an ancient capital with cultural and creative elements throughout the city.



High-tech industries such as **semiconductors, green energy,** and **AI** are driving steady growth in manufacturing output.



Total population:
1.85million

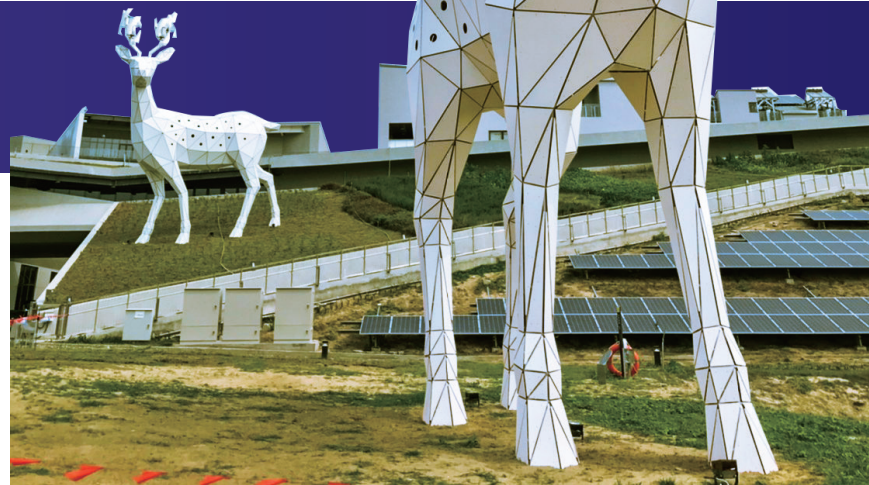
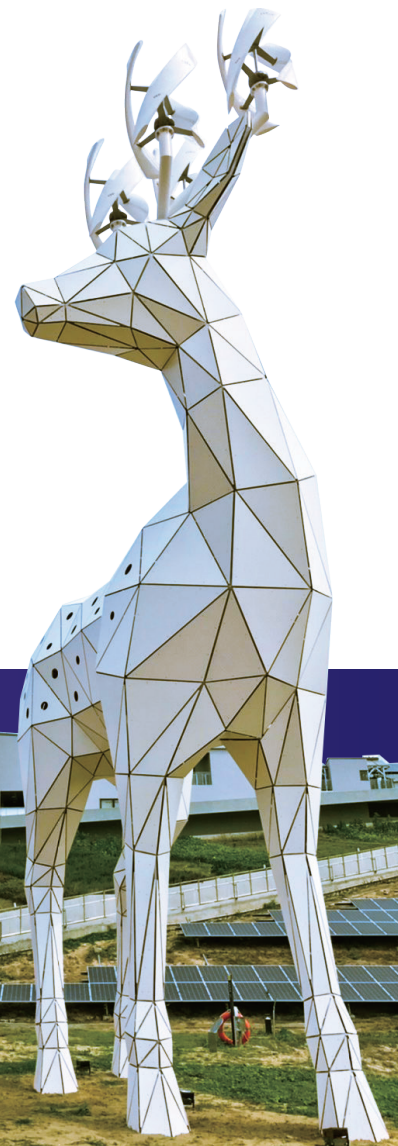


such as the semiconductor industry. With TSMC setting up operations in Tainan, many key upstream, midstream, and downstream players in the global semiconductor industry have also been drawn to establish a presence in the city.

Investing in Tainan offers investors the support of various advantageous investment promotion measures. Due to Tainan's historical development and strategic geographical location, the city has cultivated a rich and diverse cultural landscape and distinctive architectural features. This has led to the development of unique shopping

districts, boutique stores, and culinary delights.

Tainan is also home to several pioneering initiatives, including the nation's first "smart parking meter system," a closed-field autonomous vehicle testing site (Taiwan CAR Lab), and a dedicated artificial intelligence industrial zone. With its convenient urban infrastructure and a local cultural force that is increasingly international, Tainan is positioning itself as a competitive gateway to the global market, ready to seize tomorrow's innovation opportunities.



Southern Taiwan Silicon Valley Program

Anchored in Shalun, Tainan, this program strategically links the Semiconductor S Corridor to forge a complete AI industry ecosystem—driving Taiwan's industries into a future of digital transformation and net-zero sustainability.



Land area
2,191 square kilometers



1867_{AD}

Age of Discovery trade Era

In 1867, during the Age of Discovery in late Qing Dynasty's, Tainan's Anping Port was opened, and the British East India Company established the Tait & Co. Merchant House in Tainan.

1909_{AD}

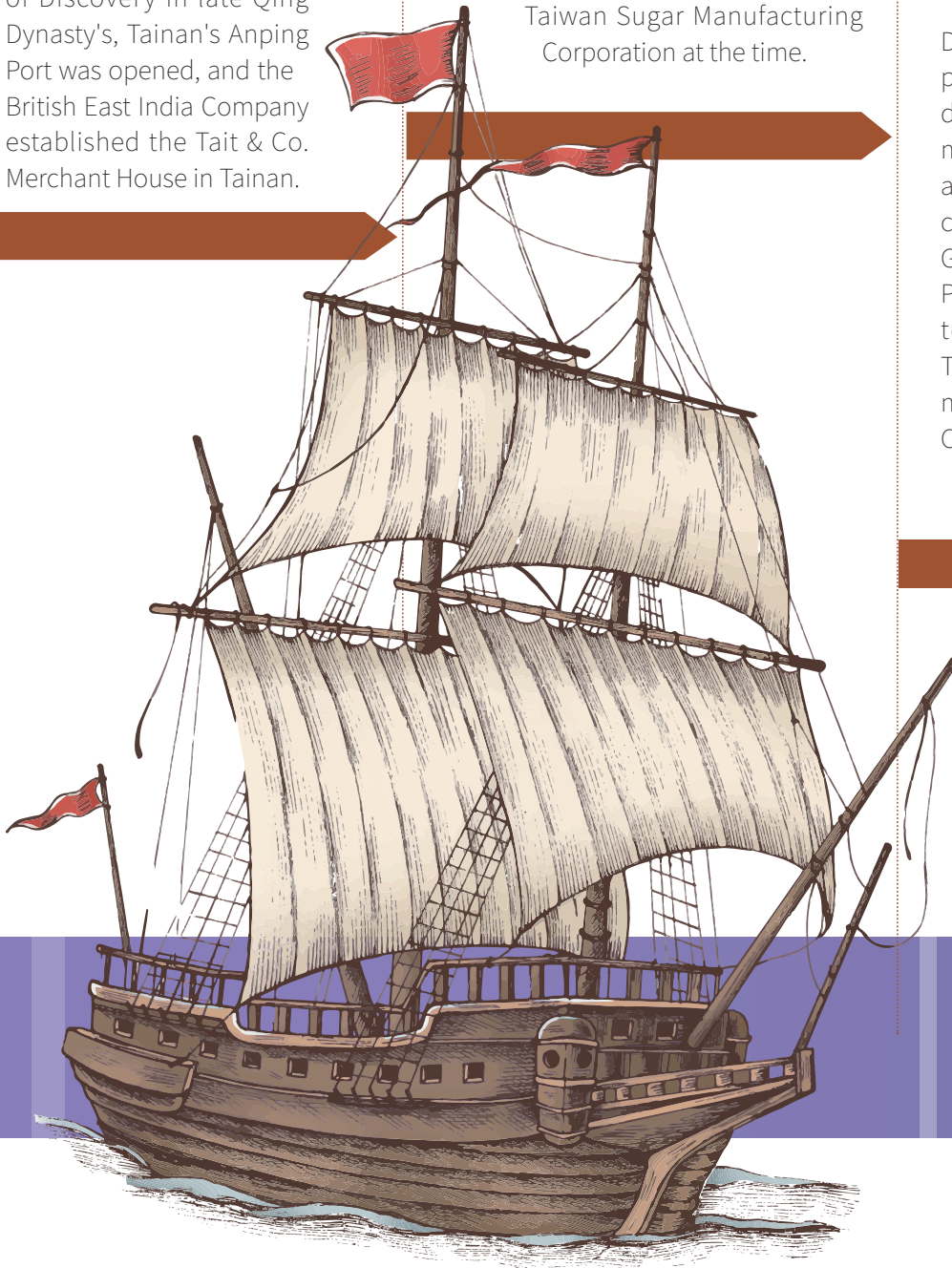
Agricultural export Era (Japanese Colonization)

Around 1909, during the Japanese colonial period, Taiwan entered the Agricultural Export Era. In an effort to make Taiwan financially and economically self-sufficient, the Japanese government began promoting industrial exports. The first major export product was sugar, leading to the establishment of the Taiwan Sugar Manufacturing Corporation at the time.

1970_{AD}

Industrialization Awakening Era

During the industrialization period, Tainan began developing consumer goods manufacturing industries, such as food processing (including companies like Black Bridge, Great Wall Enterprise, Uni-President, and Kagome), textile manufacturing (e.g., Tainan Spinning), and plastics manufacturing (e.g., Chi Mei Corporation).



chapter 02

1978_{AD}

Manufacturing and Processing Export Era

The government began promoting the development of industrial zones. During this period, several industrial parks were established in Tainan, including the Guantian Industrial Park, Yongkang Industrial Park, and Anping Industrial Park.

As the oldest city in Taiwan, Tainan has a rich and layered history. In the 17th century, the Dutch established a colonial regime here, building Fort Zeelandia and Fort Provintia in Anping. In the 18th century, during the Age of Discovery, the Qing government incorporated Taiwan into its territory and developed overseas trade through Tainan's port. By the late 19th century, following the First Sino-Japanese War, Taiwan was ceded to Japan, ushering in the Japanese colonial period. During this time, Tainan became a hub for agricultural production and export. In the 20th century, after the Republic of China government relocated to Taiwan, there was a strong push for industrialization. Tainan began developing consumer goods manufacturing and established industrial zones. Entering the 21st century, as traditional manufacturing matured, high-tech manufacturing gradually became the core of Taiwan's industrial development. The government established the Southern Taiwan Science Park in Tainan, attracting a large number of high-tech industries such as semiconductors, electronics, and ICT manufacturers. It also set up Shalun Smart Green Energy Science City, positioning Tainan as a key center for the development of Taiwan's high-tech industry. In the future, having Shalun as the starting point, the greater southern industrial ecosystem based on AI technologies will be established here, in Tainan City.

2001_{AD} ▶▶▶

Process Innovation and R&D Era

In 1997, to balance development between northern and southern Taiwan, the government established the Southern Taiwan Science Park in Tainan. The following year (1998), TSMC (Taiwan Semiconductor Manufacturing Company) set up its Fab 6 facility in Tainan.



Overview of Tainan's Historical Development

A Century-Old Capital Entering a New Era



Convenient Urban Transportation

Tainan features a well-connected road network built around the “Four Horizontals and Three Verticals” layout, comprising National Highways No. 3 and No. 1, the West Coast Expressway (Provincial Highway 61), and east-west routes including Provincial Highway 84, National Highway 8, the Tainan Metropolitan Expressway, and Provincial Highway 86. With seven main expressways and their branch roads extending from the coastal west to the mountainous east, this network creates a one-hour living circle across Greater Tainan.

The advanced transportation system (MRT) is one of Tainan’s most vital infrastructure projects. With the development of the MRT system, the city plans to establish a high-quality and convenient public transportation network centered on rail transit (MRT and Taiwan Railways), supported by city buses, taxi-buses, and public bicycles. This system will meet the needs of commuters, students, tourists, business travelers, and patients alike

Sunshine All Year Round

Tainan City enjoys a mild climate with low rainfall and abundant sunshine, recording over 2,000 hours of sunlight annually—the highest among all counties and cities in Taiwan.

Taiwan’s Largest Yacht Marina

Anping Marina, the largest yacht marina in Taiwan, offers visitors a place to relax and enjoy the relaxing ambiance where the sea meets the sky, with stunning sunsets and yachts. It stands as one of Tainan’s signature coastal experiences

“Tainan is a place suited for dreaming, for working, for falling in love, for marrying, and for enjoying a carefree and leisurely life”

Quote from Taiwanese writer and historian Yeh Shih-tao



As a century-old historic capital, Tainan is rich in cultural heritage, with numerous historical sites, charming traditional alleyways, and unique commercial districts. In recent years, with the rapid development of high-tech industries, Tainan has also progressed into a modern tech city. To accommodate the growing influx of new residents, the city has invested heavily in urban development—ranging from infrastructure such as transportation, internet connectivity, and education, to public amenities in tourism, arts and culture, and entertainment. These efforts aim to make Tainan the top choice for relocation, making it as a truly livable city.



chapter 03 Overview of Urban Lifestyle in Tainan

A Green and Vibrant City: Livable, Flourishing, and Full of Life



Globally Aligned Education

All elementary and junior high schools in Tainan have incorporated bilingual education into the curriculum. Among them, 73 schools conduct one-third of their weekly classes in a bilingual format. Notably, Shalun International High School—the first public "K (Kindergarten) to 12th Grade" school transformed from Shalun Junior High—serves as a model for bilingual education, designed to meet the needs of families moving to work in the Shalun Smart Green Energy Science City.

Comprehensive Internet Infrastructure

The backbone network built by the National Center for High-performance Computing in Tainan has supported the city's digital development from academia to industry, forming an efficient and interconnected network ecosystem

A Living Environment Ideal for Talent Relocation

Newly developed areas such as Annan District (near the Tainan Industrial Park) and Gueiren District in the special zone around the High-Speed Rail Station, as well as Xinshi District, Shanhua District, and Anding District (near the Southern Taiwan Science Park) are increasingly equipped with comprehensive living amenities, meeting the growing daily needs of the influx of professionals relocating to Tainan in recent years.

Lush, Green Urban Spaces

Tainan City Government has actively developed green spaces and themed parks to foster a high-quality living environment. The city now features 559 parks and green areas, spanning nearly 847 hectares. Among them are 51 specially designed parks that reflect the unique topography of their locations. All of these parks are equipped with inclusive and engaging play areas, enhancing both the quality of life for residents.



03 Overview of Urban Lifestyle in Tainan



Diverse Featured Shopping Districts and Night Markets

With 38 commercial district organizations and 31 licensed night markets, such as Hi An Business District, Guohua-Youai District, and the popular Tainan Flowers Night Market, Tainan offers a wide variety of leisure and entertainment options. Highlights include Guohua Street (famous for local street food), Shennong Street (historic alley with art elements), and Blueprint Cultural & Creative Park (featuring designer boutiques).

City with the Most Museums in Taiwan

Tainan is home to 57 museums and local cultural centers—the highest number and variety in the nation. These include Tainan Shan-Shang Garden and Old Waterworks Museum, Tainan City ZuoJhen Fossil Park, Tapani Incident Memorial Park, and the Chimei Museum. The annual Tainan Museum Festival further invites the public to explore the dynamics of the museums in the city.

Cultural Heritage and Historic Landmarks

Tainan has the most first-class historic monuments in Taiwan, including Fort Zeelandia, Fort Provintia, the Confucius Temple, Martial Temple, Grand Mazu Temple, Five Concubines Temple, and Eternal Golden Castle. The blend of ancient architecture with vibrant modern festivals infuses the high-tech lifestyle with rich cultural and ecological energy.

Modern and Stylish Arts and Cultural Facilities

Tainan continues to invest in art and cultural infrastructure, including Tainan Art Museum, the Tainan Public Library, and the only national-level library in southern Taiwan—Southern Branch of the National Central Library & National Repository Library.



chapter 04 Key Investment Industries

Industrial Hub: Securing Strategic Advantage

Primary Industry

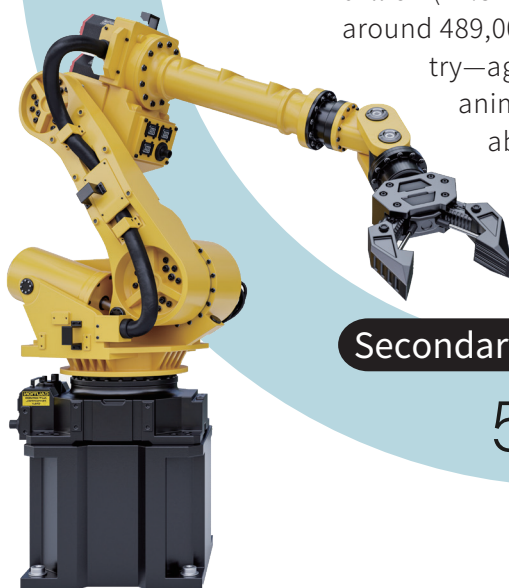
2.14%



Tertiary Industry

44.84%

The total output value of Tainan City's primary, secondary, and tertiary industries has reached NT\$3 trillion. Among these, the secondary industry—manufacturing—ranks highest at NT\$1.62 trillion (53.02%), supporting approximately 410,000 jobs. The tertiary industry—services—follows with NT\$1.37 trillion (44.84%), generating employment for around 489,000 people. The primary industry—agriculture, forestry, fishery, and animal husbandry—accounts for about NT\$65.4 billion (2.14%) and offers employment for around 60,000 people.



Secondary Industry

53.02%



Primary industry

Annual Output: Approx. NT\$65.4 Billion – Highest Among Taiwan's Six Special Municipalities

Tainan leads all six special municipalities in Taiwan in primary industry output, with an annual value of around NT\$65.4 billion. The sector covers a wide array of agriculture, aquaculture, and livestock production. Notable highlights include: second in the nation for pineapple production; first in the nation for the production of orchids, mangoes, pomelos, cantaloupes, anthuriums, starfruit, white shrimp, milkfish, and tilapia. Tainan's strong agricultural productivity is further enhanced by the presence of national research institutions such as Academia Sinica and the Industrial Technology Research Institute (ITRI), which provide professional academic and technical talents. Additionally, specialized research units like the World Vegetable Center, Livestock Research Institute, Fisheries Research Institute, Taiwan Sugar Research Institute, and Agricultural Research and Extension Station serve as key support for mid- and downstream R&D across the agricultural value chain.

Secondary industry

Annual Output: Approx. NT\$1.62 Trillion – A Total of Ten Manufacturing Sectors Each Exceeding NT\$50 Billion

Tainan City's secondary industry has an annual output value of approximately NT\$1.62 trillion, with the manufacturing sector alone contributing NT\$1.1 trillion. Among these, four industries each have annual output exceeding NT\$100 billion, including food manufacturing, basic metal manufacturing, fabricated metal product manufacturing, and electronic components manufacturing. Additionally, six industries have outputs ranging from NT\$50 billion to NT\$99.9 billion, including computer, electronic, and optical product manufacturing; chemical materials and fertilizer manufacturing; machinery and equipment manufacturing; plastic product manufacturing; automobile and auto parts manufacturing; and electric power equipment manufacturing. Indeed, Tainan-based companies have established themselves as national and global leaders in these sectors. Industries such as metal products and automotive components have developed mature, well-integrated industrial chains, with highly cohesive upstream and downstream clusters that offer flexibility, strong mutual trust, and specialized division of labor.

Tertiary industry

Annual Output: Approx. NT\$1.37 Trillion

Tainan City's tertiary industry has an annual output value of approximately NT\$1.37 trillion, which is comparable to that of the manufacturing sector. The largest share comes from the wholesale and retail trade. Additionally, tourism is one of Tainan's most important core industries, experiencing robust growth and establishing the city as one of Taiwan's top travel destinations. Tainan is home to 21 tourism factories and nearly 900 hotels and hostels.

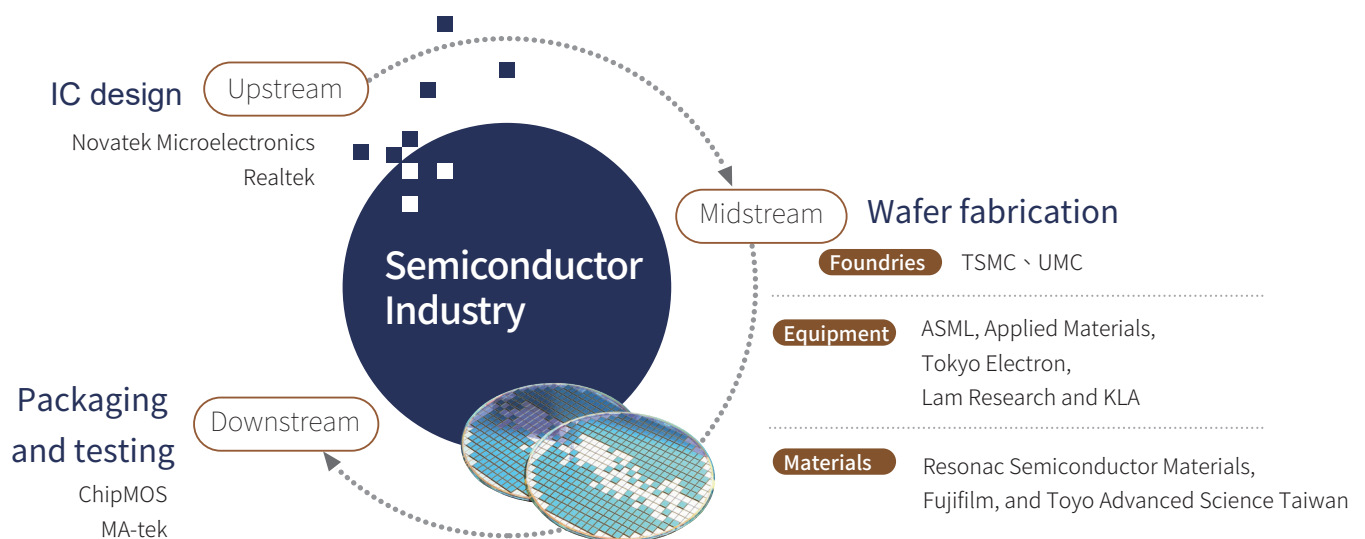
Main Competitive Industries

Semiconductor Industry

The semiconductor industry is the fastest-growing and most thriving sector in Tainan in recent years. Due to the establishment of TSMC's Fab 18 and the world's most advanced 5nm and 3nm process technologies in Tainan, many leading semiconductor material suppliers from Europe, the United States, and Japan have increased their investment in the city. The clustering effect of the industry has brought together leading upstream, midstream, and downstream semiconductor companies from around the world to Tainan.

Tainan has the most comprehensive semiconductor industry chain in the world, starting from the upstream IC design sector, which includes MediaTek, Novatek, and Realtek—three of the world's top ten IC design companies. In the midstream sector, it is home to two of the world's top five foundries: TSMC and UMC. It also hosts major global equipment suppliers such as ASML, Applied Materials, Tokyo Electron, Lam Research, and KLA, as well as foreign semiconductor material suppliers like Resonac Semiconductor Materials and Toyo Advanced Science Taiwan. In the downstream packaging and testing sectors, companies such as ChipMOS and MA-tek are present, together forming a world-class semiconductor industrial cluster.

TSMC's presence has catalyzed a cross-industry ripple effect. For TSMC's suppliers, proximity to the company is the primary motivation for investing in Tainan, as it allows them to provide better services and strengthen R&D collaboration. As a result, these supply chain companies have been gradually expanding their investments, enhancing the functions of their Tainan sites—from customer service centers to the establishment of factories, R&D centers, and even training centers. The clustering of these suppliers has also impacted on related peripheral industries. For example, the sharp increase in logistics demand has prompted foreign logistics companies to actively seek land in Tainan to plan the construction of logistics or warehousing centers.



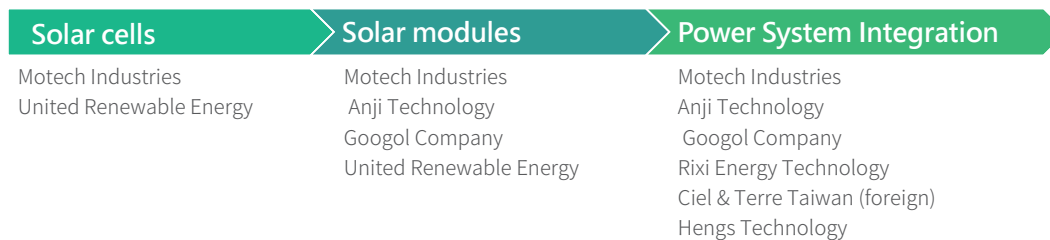


Green Energy Industry

Tainan is the city with the highest annual sunshine hours in Taiwan, offering ideal conditions for the development of the solar energy industry. It currently ranks first nationwide in solar power installations, with an installed capacity exceeding 4.7 GW, supported by a well-developed and reliable power system.

Thanks to its favorable natural conditions and strong policy support, Tainan has cultivated a relatively complete solar energy industry cluster. The city is home to solar cells and modules manufacturing companies, as well as those handling power plant system installation, management, and maintenance. This thriving ecosystem has also attracted investment from many internationally renowned enterprises.

Tainan's Upstream, Midstream, and Downstream in Solar Energy Industry



Food Manufacturing Industry

Tainan's food manufacturing industry has a long history and a solid foundation, which also means the city is home to a wealth of professionals familiar with food processing and quality standards. The industry in Tainan has an annual production value of NT\$166.8 billion, and the city is home to 874 outstanding food manufacturing companies. These include Uni-President Group, the largest food manufacturer in Asia, as well as Great Wall Enterprise and TTET Union Corporation.



Key Industries in Development

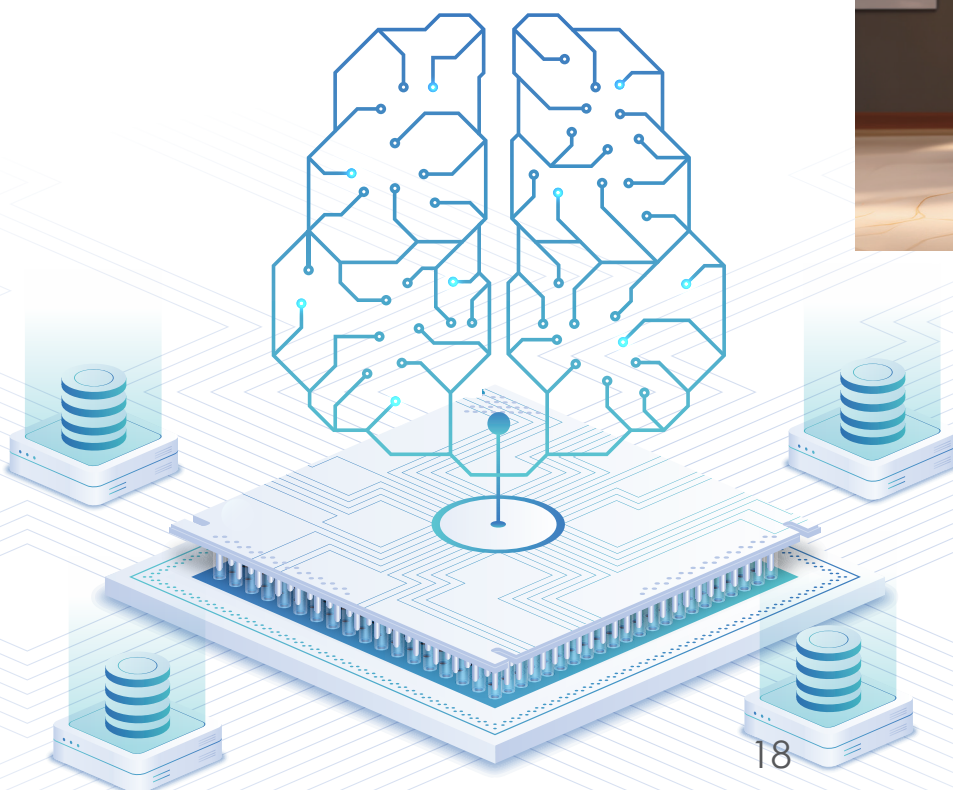


Artificial Intelligence

Tainan is located at the heart of the Southern Taiwan High-Tech S Corridor. In January 2025, the Executive Yuan launched the "Southern Taiwan Silicon Valley Program" to build an AI industry ecosystem and continue promoting the development of semiconductors, robotics, and unmanned aerial vehicles.

Having a stable southern backbone network provided by the National Center for High-performance Computing, Tainan boasts the nation's most abundant supply of green energy and is powered by two major development engines: the Southern Taiwan Science Park (STSP) and the Shalun Smart Green Energy Science City. These elements make it the most concentrated hub for chip talent cultivation in southern Taiwan. With its three key advantages—green power, computing power, and human capital—Tainan is exceptionally well-suited for AI industry deployment.

Under the National Science and Technology Council's "Southern Taiwan Silicon Valley Program", Shalun will serve as the core to connect the southern semiconductor S Corridor, creating an AI-centered industrial ecosystem. This initiative aims to accelerate digital transformation across all industries and comprehensively enhance Taiwan's global competitiveness in the technology sector.



Artificial Intelligence

Tainan possesses a strong foundation in automotive parts manufacturing, supported by a highly skilled workforce and the concentration of industry, government, academic, and research institutions. This makes Tainan a key hub for the development of Taiwan's autonomous vehicle industry. The city is also home to Taiwan's first closed-field autonomous vehicle testing site—Taiwan CAR Lab. This facility is being developed into the world's first testing ground designed to reflect the complex traffic conditions and unique driving behaviors found in the Asia-Pacific region.



Robotics Industry

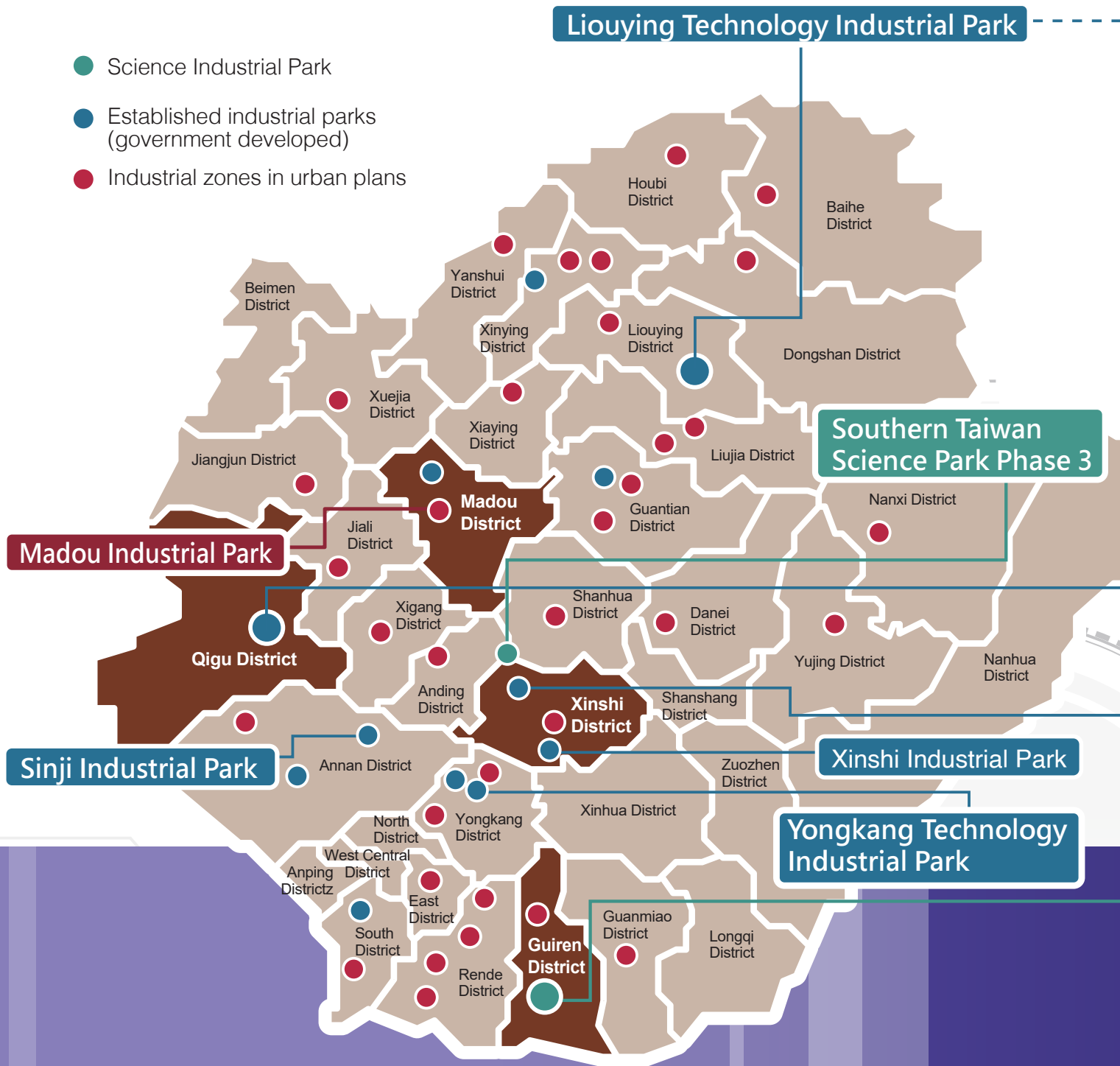
Tainan, with its strong foundation in semiconductors and precision machinery, is well-positioned for the development of the robotics industry. Key component suppliers and automation solution providers have already established a presence, contributing to the formation of a robotics industry cluster. The upcoming Phase III of the Tainan County Environment Science and Technology Park, which has already been included in official planning and budgeting, will provide space for companies within the robotics industry chain once completed.

On top of that, the Shalun Smart Green Energy Science City brings together academic, industrial, and research technologies, and has already launched the tenant recruitment process for the AI Innovation Application Building. These resources support the development of the robotics industry.

In addition, the Tainan City Government has introduced a mid-term robotics education plan, actively establishing a support system for robotics educators and enhancing curriculum design. These efforts aim to deepen AI and robotics education, giving Tainan's students more opportunities to connect with the international community, broaden their horizons, and be prepared for the challenges of the AI era.



- Science Industrial Park
- Established industrial parks (government developed)
- Industrial zones in urban plans



Phase III of Tainan County Environment Science and Technology Park

Area : 87.31 hectares

Industry categories :

Electronic components, electrical equipment, machinery and equipment, automobiles and auto parts, etc.

Development schedule : Under planning and approval

Qigu Technology Industrial Park

Area : 141.15 hectares

Industry categories :

Plastics product manufacturing, basic metal manufacturing, etc.

Development schedule : Open for investment

Southern Taiwan Eco Science Park

Area : 500 hectares

Industry categories :

Categories: Semiconductor, AI, cybersecurity, net-zero and next-generation energy

Development schedule :

In preparation

Tree Valley Park

05 Industrial Parks and Key Sites

Abundant Resources with Worldwide Reach

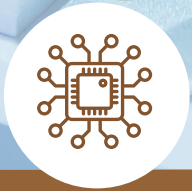
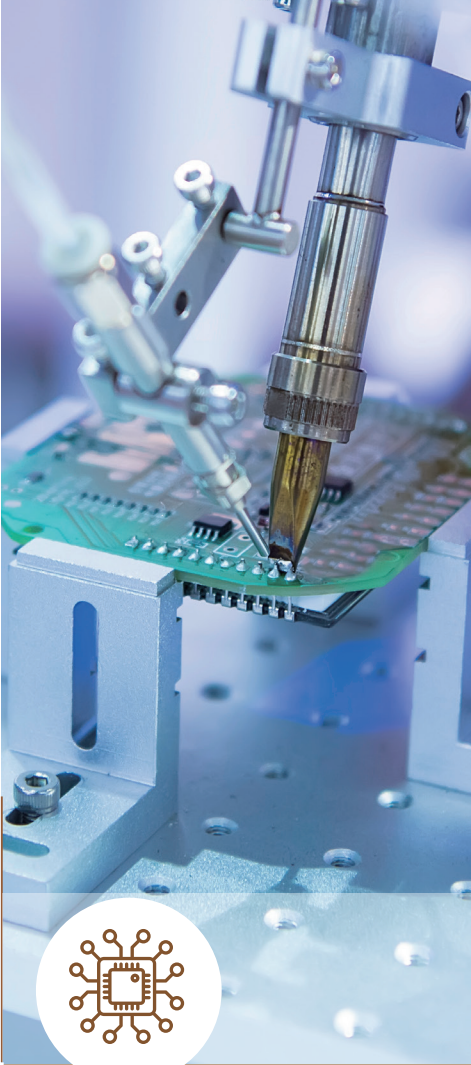
Tainan City is a vital economic backbone of southern Taiwan and a key foundation for Taiwan's integration with the global economy. It is home to 1 science park, 14 government-developed industrial parks, 28 privately developed industrial parks, 6 designated areas for factory establishment and 34 urban planning industrial zones. Also, Tainan benefits from a wealth of national and local resources that support industrial development. Within its territory are five major strategic sites that play a critical role in the promotion of key industries.



Southern Taiwan Science Park (STSP) Industrial Cluster

The Southern Taiwan Science Park (STSP) is one of Taiwan's three major national science parks, covering an area of 1,128 hectares. The integrated circuit industry possesses strong international competitiveness due to its advanced and comprehensive process technologies. It primarily attracts high-tech industries and scientific and technical talent, driving the development of advanced technology sectors. This has led to the formation of a complete upstream, midstream, and downstream high-tech industrial cluster, enhancing the industry's global competitiveness. The main industries introduced into the STSP include optoelectronics, integrated circuits, and precision machinery.

STSP offers three major investment advantages: tax incentives, one-stop administrative services, and abundant R&D resources. Through programs such as the Emerging Technology Application Program, the Science Park Talent Cultivation Subsidy Program, and the Talent Training and Industry-Academia Collaboration Program, the STSP encourages collaboration between park-based companies and academic and research institutions. By leveraging the strengths of the Tainan region, the STSP indeed serves as a core engine for industrial development in southern Taiwan.



Integrated Circuit Industry Cluster

The integrated circuit (IC) industry cluster in the STSP is highly comprehensive. Driven by major foundries such as TSMC and UMC, the park has attracted a wide range of upstream raw material suppliers—including those providing CMP slurry and quartz furnace tubes—as well as downstream packaging, testing, and equipment suppliers. With TSMC’s ongoing investment in the STSP, its 12-inch wafer fabs for 3nm and 5nm process technologies have already entered mass production. This positions the STSP as a key hub for top-tier semiconductor talent and companies, and as the global leader in advanced semiconductor manufacturing processes.



Optoelectronic Industry Cluster

The STSP is the most fully vertically integrated cluster for the TFT-LCD industry in Taiwan. In terms of vertical integration, it encompasses the entire supply chain from upstream key components such as glass substrates, liquid crystal materials, touch LCDs, brightness enhancement films and prism sheets, polarizers, photomasks, and backlight modules, to midstream panel manufacturers, and downstream LCD TV producers. As Taiwan moves toward becoming a global leader in the flat panel display industry, the STSP will still be a pivotal and essential role.



Precision Machinery Industry Cluster

The development of the precision machinery industry in the STSP has progressed alongside the investment and establishment of major semiconductors and optoelectronic companies, resulting in an industrial clustering effect. Many domestic and international equipment manufacturers have already entered the STSP, providing automation solutions and inspection equipment, thereby attracting even more investors and precision machinery companies to the STSP.



Shalun Smart GreenEnergy Science City

Located at the transportation hub of Tainan High-Speed Rail Station, Shalun Smart Green Energy Science City not only focuses on academic research in fields such as cybersecurity, green energy, smart systems, and biotechnology and healthcare industries, but also provides substantial R&D resources and comprehensive living amenities. Adopting a “Research–Establishment–Expansion” development model, it activates field applications and drives the clustering of green energy technology industries in southern Taiwan.

Major developments already in place include the Academia Sinica Southern Campus, the NSTC Cybersecurity and Smart Technology R&D Building, and the Green Energy Technology Demonstration Site of the Ministry of Economic Affairs. These are supported by existing academic and research institutions in Tainan, such as the NCKU Academy of Innovative Semiconductor and Sustainable Manufacturing, the Taiwan Semiconductor Research Institute of NARLabs, and the National Center for High-Performance Computing. Together with the STSP, these entities form a dual-engine system that not only attracts industrial clusters but also establishes a strong foundation for the continued growth of Tainan’s technology industry.

Industry Promotion Sites



AI Industry Zone

Taiwan’s first Artificial Intelligence Industry Zone will be established in the Tainan High-Speed Rail special zone. The zone aims to promote both the industrialization of AI and the AI-zation of traditional industries. Starting from Shalun, AI applications will be integrated across a wide range of sectors, realizing Taiwan’s ambition to become a global innovation island powered by artificial intelligence.

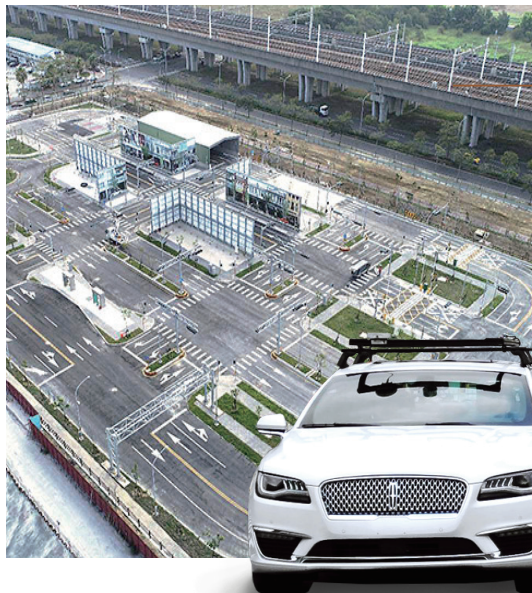


ICC Tainan

The ICC Tainan, located next to the Tainan High-Speed Rail Station, is a modern convention and exhibition facility that serves as a platform for industrial interaction, business transactions, and a showcase for the city. It promotes local industries while enhancing opportunities for domestic and international technological and commercial exchange, thereby driving overall economic development.

WinWin Innovation & Incubation Base

Tainan has established dedicated spaces to support the development of startup industries, bringing together the city's academic, industrial, and research resources to assist startup teams by offering matchmaking and entrepreneurial coaching services. These spaces serve as a foundation for young entrepreneurs to hone their skills and grow. The WinWin Innovation & Incubation Base features seven offices designed to accommodate startup teams of 4 to 6 people, along with co-working spaces, a training classroom for 20 participants, and a live streaming/photo studio for product promotion. Each floor is also equipped with leisure and interaction areas for team networking. The base continuously hosts entrepreneurship-related courses, workshops, and events, aiming to provide youth who are returning to their hometown with high-quality services and startup space as they pursue entrepreneurial ventures in their hometown.



Taiwan CAR Lab

Due to Taiwan's highly complex traffic environment and Tainan's strong automotive parts manufacturing industry along with highly skilled human resources, the autonomous vehicle industry developed under these conditions is expected to have greater opportunities and competitiveness compared to other countries that are also developing autonomous driving technologies. This testing field provides facilities for autonomous vehicle testing and demonstration, allowing companies to test and showcase their products while also offering public engagement and educational experiences. In terms of research and development, Taiwan CAR Lab aims to build technological capacity to support academic and research teams in advancing autonomous driving technologies, cultivating talent, and developing application services, thereby creating a comprehensive layout for the industry's ecosystem.

One-stop Service for Investments

The Investment and Business Section assists enterprises with investment planning and promotion, introduces the local investment environment, organizes domestic and international investment promotion events or meetings, provides related support and services to remove investment obstacles to all businesses.

- **Address:**
3F, No. 6, Sec. 2, Yonghua Road, Anping District, Tainan City
- **Telephone:** 0800-067-795
- **Tainan City Government Economic Development Bureau:**
<https://economic.tainan.gov.tw/>
- **Tainan City Investment Invitation Service:**
invest.tainan.gov.tw/
- **Email:** investtainan@mail.tainan.gov.tw

Investment Services

Investment Coordination Meetings — Fast and Efficient

Tainan has established a unique “Major Investment Coordination Meeting” mechanism. Investing in Tainan comes with comprehensive support from the city government through exclusive personnel, responsibility, and project-based services. These meetings are regularly chaired by the mayor to coordinate all relevant departments and bureaus, as well as to assist the enterprises to speed up their investments.

Tainan City is fully committed to assisting returning Taiwanese businesses with their investment. The city government not only coordinates and integrates different units and entities, but also offers a one-stop service for business registration, along with online applications, mobile payment options, and diverse payment systems, making it easier for the public to access services. This proactive and efficient investment environment is designed to create a visible and promising future for the younger generation.

Creating Outstanding Environment to Kickstart the Economic Engine

To boost investment synergy in Tainan, the city continues to promote regulatory relaxation and remove barriers to investment, while fostering a sound and healthy investment environment. In addition to accelerating public infrastructure projects, Tainan is actively addressing key challenges faced by investors—such as land acquisition, labor supply, water and electricity access, and the availability of skilled professionals—in order to eliminate industrial bottlenecks, strengthen investor confidence, and stimulate overall economic growth.



chapter 06

Incentives for Investments

Tainan Local SBIR

To encourage small and medium-sized enterprises (SMEs) to conduct innovative research on industrial technologies and products, innovation and R&D subsidies are provided to businesses within the jurisdiction. These subsidies aim to accelerate the enhancement of industrial competitiveness among SMEs in Tainan City and promote industrial development. The maximum subsidy per project is NT\$1 million, up to NT\$2 million for joint R&D projects, and up to NT\$5 million for themed alliances.

Tainan City Self-Government Ordinance for Promoting the Development of Technology and Innovative Industries

For industries such as green energy, biotechnology, digital technology, fashion, conventions and exhibitions, cultural and creative industries, or other technology and innovative industries recognized by the competent authority, incentives or subsidies are provided to investors. These may include reductions or exemptions in house tax, land value tax, real estate rental fees, labor training expenses, and costs associated with technology development or innovative service R&D projects.

Tainan City Government Youth Entrepreneurship and SME Credit Guarantee Loan Program

To strengthen the economic foundation of small and medium-sized enterprises (SMEs), the Tainan City Government collaborates with the Small and Medium Enterprise Credit Guarantee Fund of Taiwan to provide operating capital for local SMEs. The program increases loan amounts to help young entrepreneurs and businesses secure financing, enabling them to access opportunities for innovation and growth, thereby promoting the city's prosperity and driving economic development.

Key Investment Enterprises:

TSMC/UMC/ASML/Garmin/Applied Materials/Lam Research/ Tokyo Electron/Resonac Semiconductor Materials/Fujimi Corporation/AMD/Micron, etc.

Manufacturers Association that Activates Communication Channels

Tainan City has established 22 Manufacturers Associations, which, along with Tainan Industry Association and the Allied Association for Southern Taiwan Science Park, serve as vital bridges between the city government and local businesses. These associations help build strong communication channels, strengthen coordination, planning, and organizational functions among companies, and effectively promote interaction and collaboration within industries—contributing to the overall development of Tainan’s industrial areas.

| NO. | Name | NO. | Name |
|-----|--|-----|---|
| 1 | Tainan City Guantian Industrial Park Manufacturers Association | 12 | ShangShan Industrial Park Manufacturers Association |
| 2 | Tainan City Sinying Industrial Park Manufacturers Association | 13 | Tainan City Environment Science and Technology Park Manufacturers Association |
| 3 | Tainan City Zhonglun Industrial Park Manufacturers Association | 14 | Rende Industrial Park Manufacturers Association |
| 4 | Tainan City Chiali Industrial Park Management Association | 15 | Xinshi Industrial Park Management and Development Association |
| 5 | Tainan City Baoan Industrial Park Management Association | 16 | Houbi Industrial Park Manufacturers Association |
| 6 | Tainan City Asia-Pacific Industrial Park Development Association | 17 | Shintien Industrial Park Manufacturers Association |
| 7 | Tainan City Industrial Park Manufacturers Association | 18 | Tainan Yongkang Industrial Park United Firms Association |
| 8 | Tainan City Park Manufacturers Joint Association | 19 | Wanli Industrial Park Manufacturers Association |
| 9 | Ho-Shiun Industrial Park Association | 20 | Madou Industrial Park Manufacturers Association |
| 10 | Zongtouliao Industrial Park Manufacturers’ Association | 21 | Shin Ji Industrial Park Manufacturers Association |
| 11 | Tainan Yongkang Industrial Park Manufacturers Association | 22 | Tree Valley Industrial Park Manufacturers Association |

Investment Services and Incentives

Dedicated Investment Services: Exclusive Projects, Personnel and Responsibility

Pioneer Stock Board (PSB)

To support innovative and creative potential micro-enterprises by providing funding and advisory services, the Tainan City Government collaborates with the Taipei Exchange (TPEX) to identify and recommend outstanding companies to participate in the PSB. The city holds irregular meetings of the “Tainan City Government PSB Promotion Program Review Committee,” and companies with approved applications will be recommended to TPEX as enterprises with innovative products.

Tainan City Urban Planning Industrial Zone Upgrading and Three-dimensionalization 2.0

To accelerate private investment and industrial development, and to support the upgrading and transformation of existing urban planning industrial zones, the government offers incentives such as floor area ratio (FAR) bonuses and increases the upper limit of total FAR rewards. These measures aim to improve land-use efficiency in urban planning industrial zones and industrial-use areas, provide essential space for the development of innovative industries, encourage faster private investment, promote industrial upgrading and transformation, enhance domestic investment synergy, reduce the environmental impact of industrial zone development, and foster the creation of industrial added value.

Incentives and Subsidies for Enterprises Organizing Conferences and Exhibitions and for Participating in Overseas and Local Trade Shows

To encourage various sectors to organize conferences and exhibitions in Tainan City, integrate local industries, technologies, and specialty products, promote the development of the MICE (meetings, incentives, conferences, and exhibitions) industry, and assist promising and startup enterprises in marketing their high-quality products to successfully enter international markets and expand their reach.

